



Leadership on the line: *How to shine in challenging situations*

**Jim Grieve, Assistant Deputy Minister
Early Learning Division
Ministry of Education
October 18, 2012**



reach every student
appuyer chaque élève





reach every student
appuyer chaque élève





reach every student
appuyer chaque élève



reach every student
appuyer chaque élève



Welcome to Scott Wade's

Dirty Car Art

NEW GALLERY,
Easier to navigate &
NEW IMAGES!

★ gallery

★ Check out the latest
press & news

★ Tell Scott what you think of
the new look & gallery...
email Scott

Want Scott at your event?
Need a fresh PR idea?

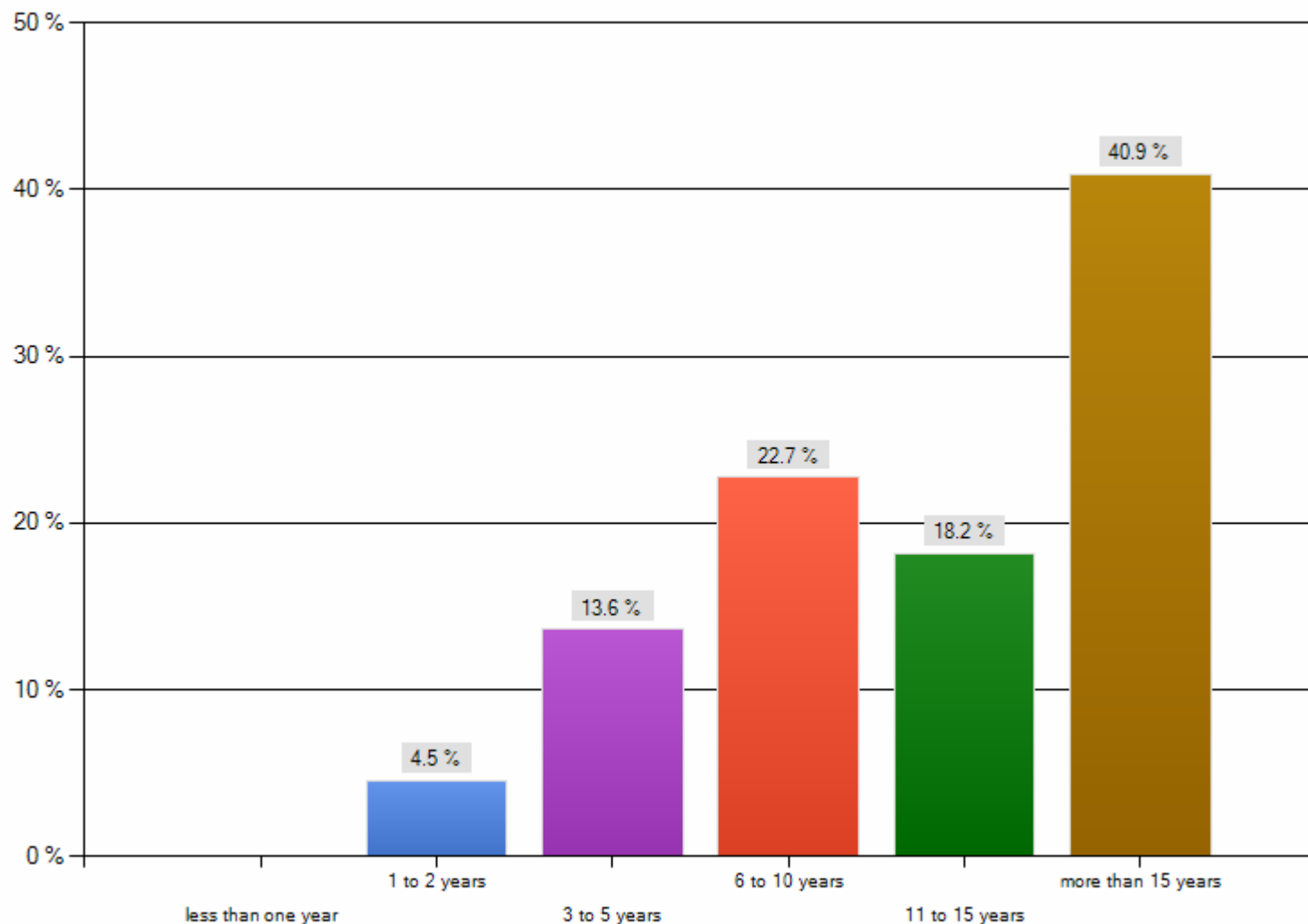
inquiries



A little info about the artwork on this site:

Like any reasonably creative and curious human, Scott can't resist a dirty rear car window. We suspect that Scott started off with clever sayings, like, "wash me." Probably his first image was the ubiquitous smiley face. Unlike most folks however, Scott lives on a mile and a half of dirt road - caliche, as the locals call it, road-base: a blend of limestone dust and gravel and clay. Driving over this surface results in a fine, white dust that billows up behind any vehicle driven faster than a galloping turtle, coating the rear window. Being an experienced artist (and let's face it, a little different), it wasn't long before Scott was experimenting with techniques to achieve these amazingly detailed

How long have you been in your current role?



reach every student
appuyer chaque élève



fiscal
restraints


improving
quality

work
load

reach every student
appuyer chaque élève



fiscal restraints




reach every student
appuyer chaque élève



Ontario



improving
quality



reach every student
appuyer chaque élève



Ontario



reach every student
appuyer chaque élève



**Early Learning Framework** ▼

- ▶ [Home](#)
- ▶ [Principles](#)
- ▶ [Observation and Documentation](#)
- ▶ [Learning Environments](#)
- ▶ [Continuum of Development](#)

Learning in Ontario ▼

- ▶ [Child Care](#)
- ▶ [Full-Day Kindergarten](#)
- ▶ [Elementary](#)
- ▶ [Secondary](#)
- ▶ [French-Language Education](#)
- ▶ [Postsecondary](#)
- ▶ [Adult Learning](#)

Employment Ontario >**Popular Topics** >**Publications** >**Frequently Asked Questions** >

EARLY LEARNING



E-MAIL

PRINT

What is the Early Learning Framework?

The Early Learning Framework is a guide to support early childhood programs in Ontario. With six distinct principles, the Early Learning Framework provides a shared language and understanding of child development. The goal is to support you, early childhood educators and other early learning practitioners, as you work in early childhood settings.

The Early Learning Framework is based on research and perspectives from diverse fields of knowledge. It recognizes the distinct values held by families, communities, and cultures. It complements most curriculum approaches. The framework is a dynamic document that will continue to evolve as it is used by those who work with and care for young children.



Who can use the Early Learning Framework?


This website is intended for anyone who works with or cares for children from birth to eight years of age. It can be used to guide practice in a variety of settings, such as:



reach every student
appuyer chaque élève



work/life
balance



reach every student
appuyer chaque élève



Ontario

the *im*perfect balance



reach every student
appuyer chaque élève



Eight cups of coffee \neq eight hours of sleep



reach every student
appuyer chaque élève

Motivation

reach every student
appuyer chaque élève

branch, esp of fr

▷ lead·er·les

lead·er·ship

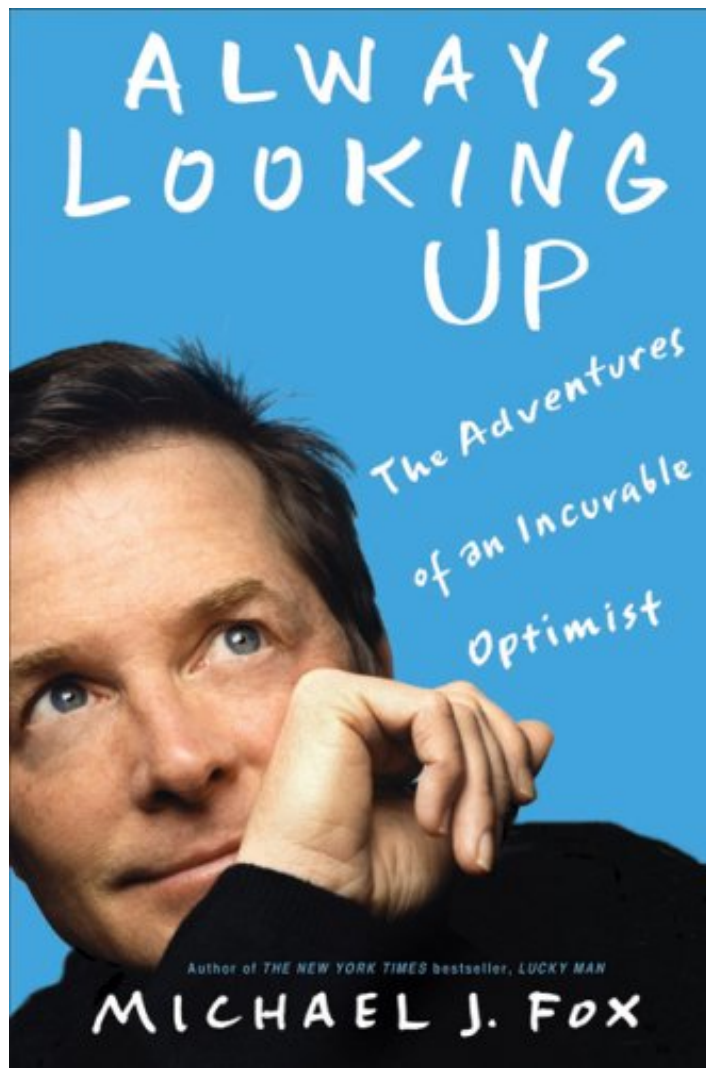
responsibilities of leadership
crisis. 2 [U] ability to be a
leadership necessary in a team
leadership potential. 3 [CG]



reach every student
appuyer chaque élève

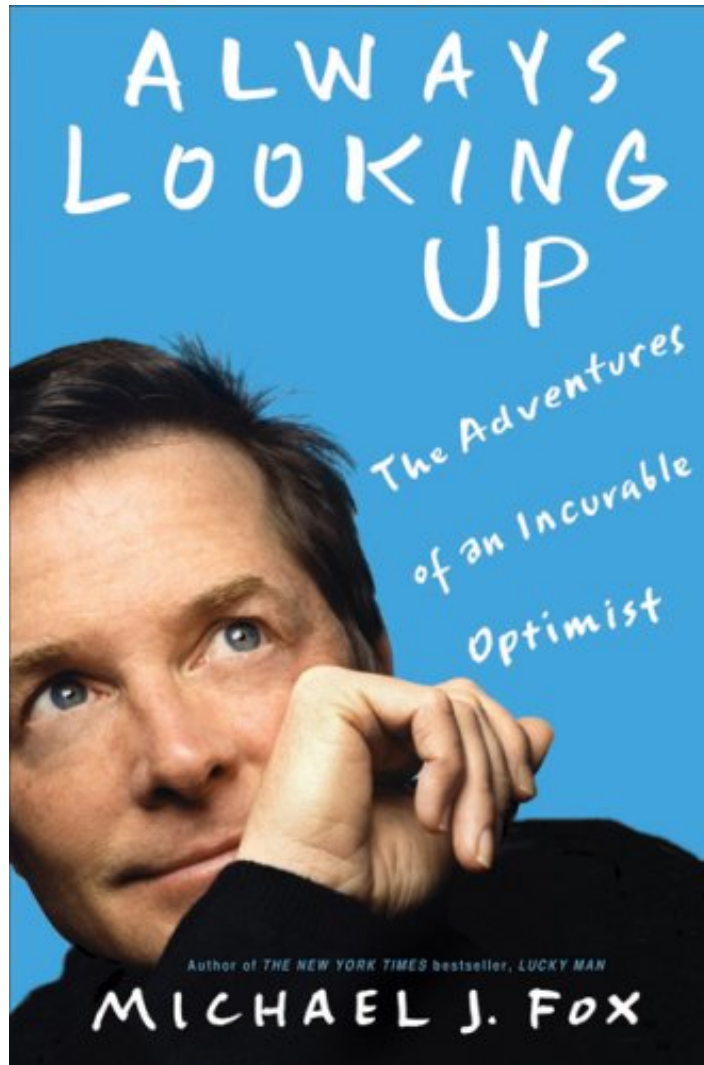
 Ontario





reach every student
appuyer chaque élève





Are we
there
yet?

reach every student
appuyer chaque élève



